



FireEye™

Central Management System Network Malware Control System

The FireEye Central Management System (CMS) manages enterprise-wide deployments of FireEye security appliances offering a single console for real-time security event analysis and consolidated management. The FireEye CMS is a network-based appliance that serves as both a security event storehouse and central management device for FireEye appliances.



Streamlined central management

Together with FireEye security appliances, the CMS forms an integral part of the FireEye Network Malware Control System (NMCS). The FireEye NMCS protects enterprises against the exponentially growing threat of target malware and crimeware. The system offers streamlined central management and protection against network-borne exploits, both known and unknown.

At-a-glance security dashboard

The FireEye CMS security dashboard gives administrators a real-time view into the network's anti-malware security state. With a quick glance, you can determine the number of infected, out of compliance, or clean machines as well as drilling down on infected machines to determine next steps. This provides administrators the timely and concise data necessary to quickly assess network security and to take corrective action.

Consolidated security event storehouse

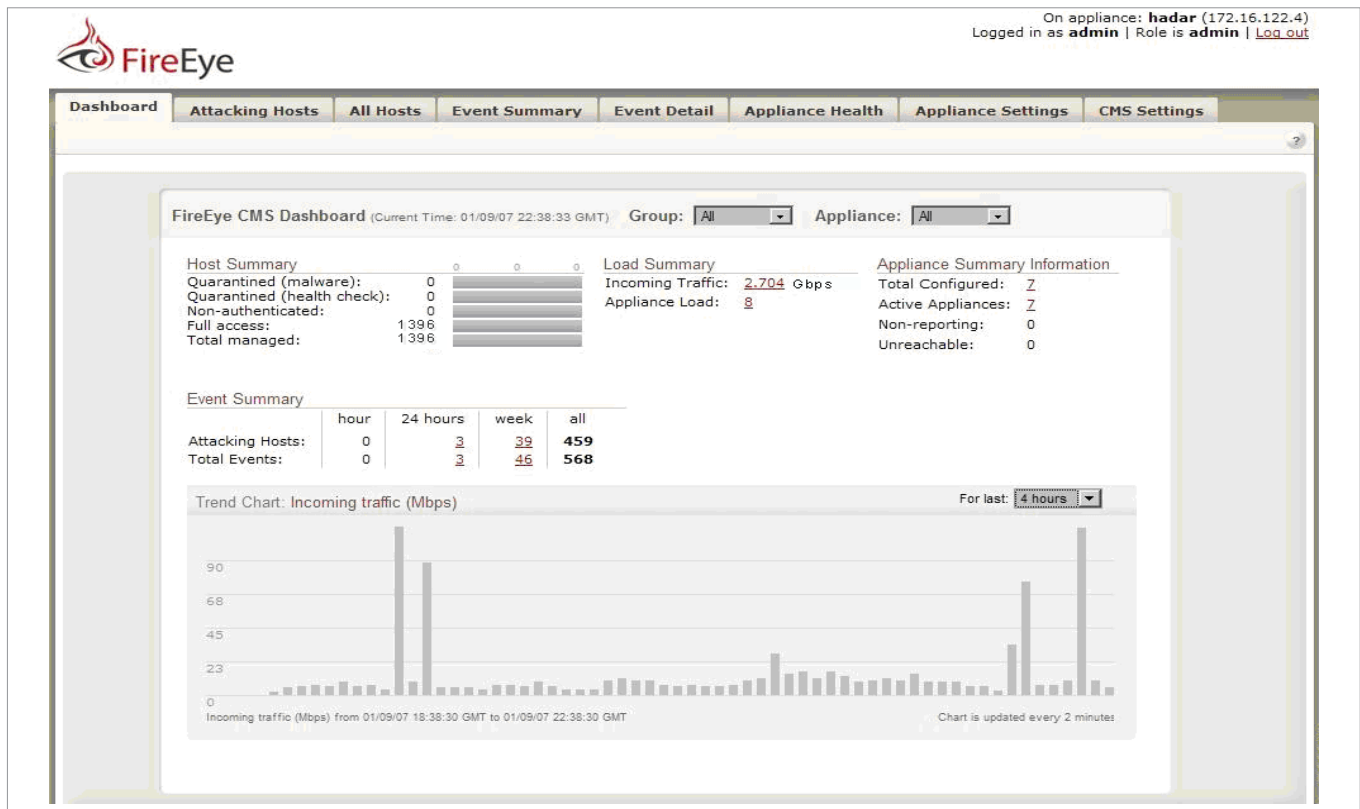
In enterprise-wide security deployments, it is critical to have a central data storehouse for efficient, consolidated reporting. The data storehouse also provides a means to collect and store audit-relevant security events to meet long-term data retention requirements.

Group configuration and remote appliance upgrades

Finally, for efficient enterprise deployments, the FireEye CMS features dynamic configurations so settings can be centrally determined and then distributed. This enables administrators to remotely configure and view settings for a single appliance or a group of appliances. Appliance upgrades can be centrally deployed to all managed appliances en masse ensuring the latest security capabilities across all appliances.

FireEye Central Management System

The FireEye CMS is available in two configurations; one for managing up to 5 FireEye security appliances or a different configuration for managing up to 25 FireEye security appliances.



The FireEye CMS dashboard gives administrators a summary status of network security.

Specifications	
Appliances managed	Up to 5 Up to 25
Form factor	1U rack-mount
Weight	37lbs, (16.78kg)
Dimensions	17.25"W x 21.75"D x 1.75"H (43.82x 55.25 x 4.45 cm)
Enclosure	Fits 19-inch rack
AC input voltage	90 - 264 VAC full range
AC input current	2.1 Amps
Frequency	50-60Hz
AC power	400 W max
Ambient temperature	27 °C

Features	Benefits
Security dashboard	<ul style="list-style-type: none"> Provides an at-a-glance security overview coupled with drill-down capabilities on items such as critical security events and appliance workloads enabling fast diagnosis and remediation processes
Security event storehouse	<ul style="list-style-type: none"> Consolidates information from managed FireEye appliances allowing timely and concise security event reporting while also collecting and storing audit-relevant security events to meet long-term data retention requirements
Centralized configuration management and upgrades	<ul style="list-style-type: none"> Enables administrators to set, update, and upgrade appliance configurations on an individual or group basis

Find out more

For a more information, visit us at www.fireeye.com, call 877-fireeye (347-3393), or email fireeye@fireeye.com.

About FireEye, Inc.

FireEye, Inc is the leader in malware control, providing protection for the network against crimeware and targeted attacks. Our solutions bring advanced network security together with state-of-the-art virtualization technology to safeguard company information, customer data, intellectual property, and enterprise resources - solving critical business needs without taxing IT administration.